

ARCO SUBMERSO












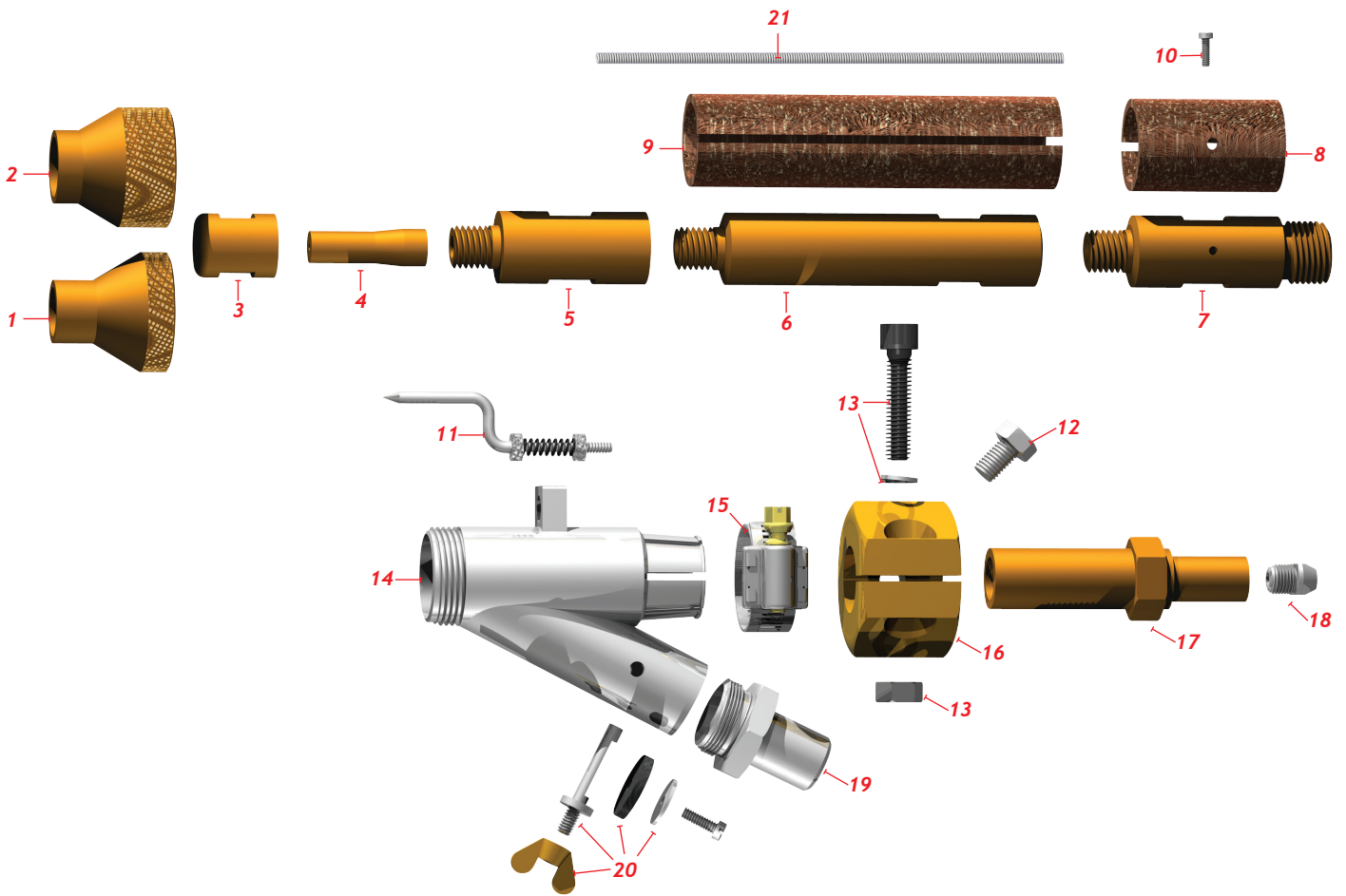
<p>Características Técnicas Technical Data</p>	<p>Controlador Manual de Fluxo Flow Manual Controller Indicador de Posição do Cordão de Solda Weld Position Indicator</p>	
	<p>Indicações Recommendation</p> <p>Para soldas ao Arco Submerso For Submerged Arc Weld</p>	<p>Catálogo Digital QR Code</p> 
<p>Ciclo de Trabalho - Duty Cycle</p> <div style="text-align: center;">  </div>		
		<p>1,59 a 4,76 Arames (mm) Wire (mm)</p>

E06/20-V3

Código/Code	Descrição/Description	Estoque/Stock
0501.1003	Tocha Arco Submerso SU 1200 SU 1200 Submerged Arc Torch	●

Legenda/Legend: ● Produto Regular ● Produto Sob Demanda

Foto/Photo	Código/Code	Descrição/Description	Med./Mes.	Foto/Photo	Código/Code	Descrição/Description	Med./Mes.	
	01	0500.2036	Ø19mm		04	Tubo de Contato 40mm Contact Tip 1.9/16"	3,97mm 5/32"	
	02	0500.2037	Ø24mm		0500.1360	4,76mm 3/16"		
	03	0500.1333	Porca Fixadora do Tubo de Contato Contact Tip Nut		05	0500.1334	Extensão 50,8mm 2" Extension	
		0500.1352	1,59mm 1/16"		06	0500.1335	Extensão 127mm 5" Extension	
	04	0500.1354	Tubo de Contato 40mm Contact Tip 1.9/16"	2,38mm 3/32"		07	0500.1336	Fixador do Adaptador Adaptator Support
		0500.1356	3,17mm 1/8"		08	0500.1337	Capa Isolante 50,8mm 2" Insulated Cover	



Foto/Photo	Código/Code	Descrição/Description	Med./Mes.
	09	0500.1338 Capa Isolante 127mm 5" Insulated Cover	
	10	0500.1339 Parafuso de Fixação da Capa Cover Screw	
	11	0500.1340 Conjunto Pino Indicador de Posição Indicator Pin kit	
	12	0500.1341 Parafuso Sextavado de Fixação do Cabo Cable Screw	
	13	0500.1342 Conjunto Parafuso de Aperto Screw kit	
	14	0500.1343 Conjunto Controlador de Fluxo Flow Control kit	

Foto/Photo	Código/Code	Descrição/Description	Med./Mes.
	15	0500.1344 Abraçadeira Clamp	
	16	0500.1345 Sextavado de Contato Contact	
	17	0500.1346 Adaptador Adaptator	
	18	0500.1347 Guia do Arame Wire Guide	
	19	0500.1348 Terminal da Mangueira de Fluxo Flow Hose Terminal	
	20	0500.1349 Kit Controlador de Fluxo Flow Controler Kit	
	21	0800.8117 Guia Espiral s/Revestimento 2,40/2,80mm Liner Without Cover	p/metro p/meter